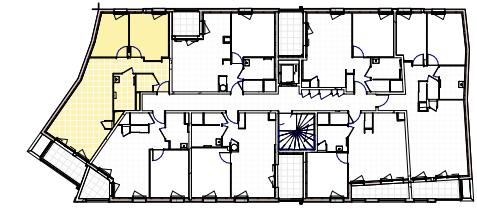




atelier
CALC
lyon
dijon



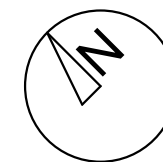
| Batiment | N° Appartement | Type | Niveau |
|----------|----------------|------|--------|
| 1 | 1103 | T3 | R+1 |

Tableau de surfaces

| | |
|--------------------------|---------------------------|
| Entrée | 6.87 |
| Séjour/Cuisine | 25.54 |
| Chambre 1 | 11.24 |
| Chambre 2 | 9.00 |
| Salle de bain | 4.90 |
| WC | 1.93 |
| | |
| | |
| | |
| | |
| Surface Habitable | 59.48m² |
| Terrasse | 5.59 |
| | 5.59m² |
| Surface Pondérée | 62.27m² |



Date
Indice B - 31/07/2020



GROUPE **ED** **Edouard Denis**

