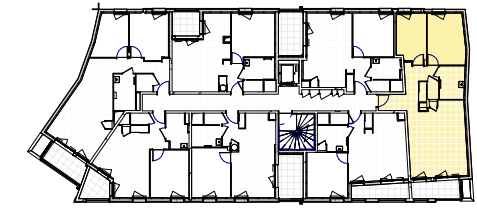




atelier
CALC
Lyon
dijon

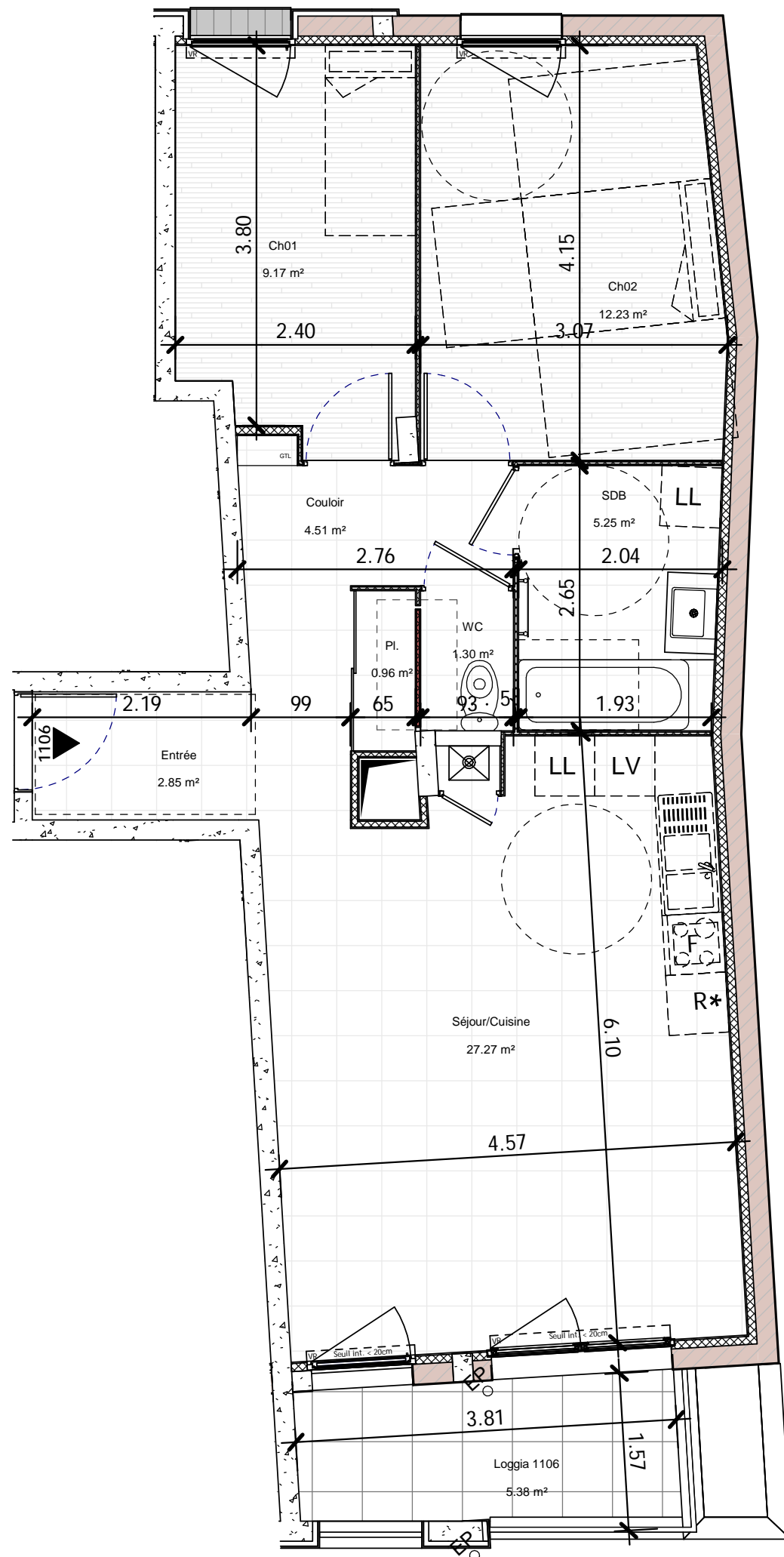
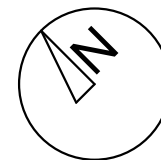


Batiment	N° Appartement	Type	Niveau
1	1106	T3	R+1

Tableau de surfaces

Entrée	2.85
Couloir + placard	5.47
Séjour/Cuisine	27.27
Chambre 1	12.23
Chambre 2	9.17
Salle de bain	5.25
WC	1.30
Surface Habitable	63.54m²
Loggia	5.38
	5.38m ²
Surface Pondérée	66.23m²

Echelle	Date
	Indice B - 31/07/2020



GROUPE **ED** **Edouard Denis**