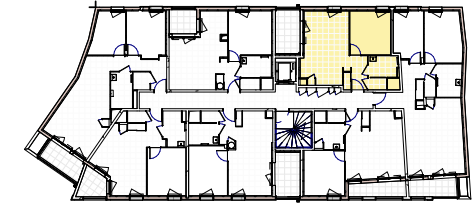


atelier
CALC
lyon
dijon



Batiment	N° Appartement	Type	Niveau
1	1105	T2	R+1

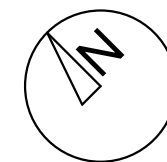
Tableau de surfaces

Entrée + placard	4.27
Séjour/Cuisine	20.66
Chambre	11.43
Salle d'eau	4.00
WC	1.40
Surface Habitable	41.76m²
Terrasse	6.79
	6.79m²
Surface Pondérée	45.15m²

LL LV



Date
Indice B - 31/07/2020



GROUPE **ED** **Edouard Denis**