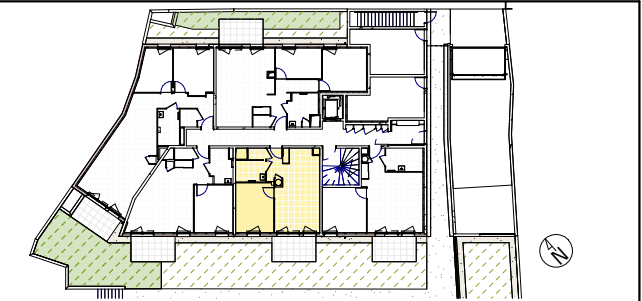


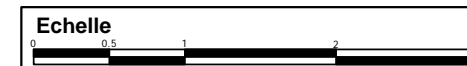
atelier
CALC
lyon
dijon



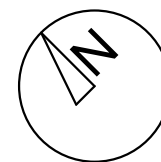
| Batiment | N° Appartement | Type | Niveau |
|----------|----------------|------|--------|
| 1 | 1002 | T2 | RDC |

Tableau de surfaces

| | |
|--------------------------|----------------|
| Entrée + placard | 3.72 |
| Séjour/Cuisine | 21.07 |
| Chambre | 12.04 |
| Salle d'eau | 4.13 |
| WC | 1.30 |
| | |
| | |
| | |
| | |
| Surface Habitable | 42.26m² |
| Terrasse + jardin | 28.13 |
| | 28.13m² |
| Surface Pondérée | 56.32m² |



Date
Indice B - 31/07/2020



GROUPE **ED** **Edouard Denis**