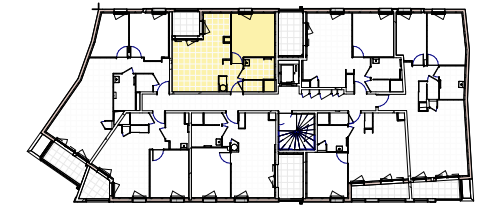


atelier
CALC
lyon
dijon

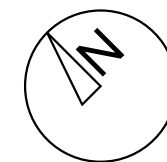


Batiment	N° Appartement	Type	Niveau
1	1104	T2	R+1

Tableau de surfaces

Entrée + placard	3.49
Séjour/Cuisine	21.90
Chambre	12.50
Salle d'eau	4.16
WC	1.42
Surface Habitable	43.47m²
Loggia	4.34
	4.34m²
Surface Pondérée	45.64m²

Echelle	Date
0 0.5 1	Indice B - 31/07/2020



GROUPE **ED** **Edouard Denis**